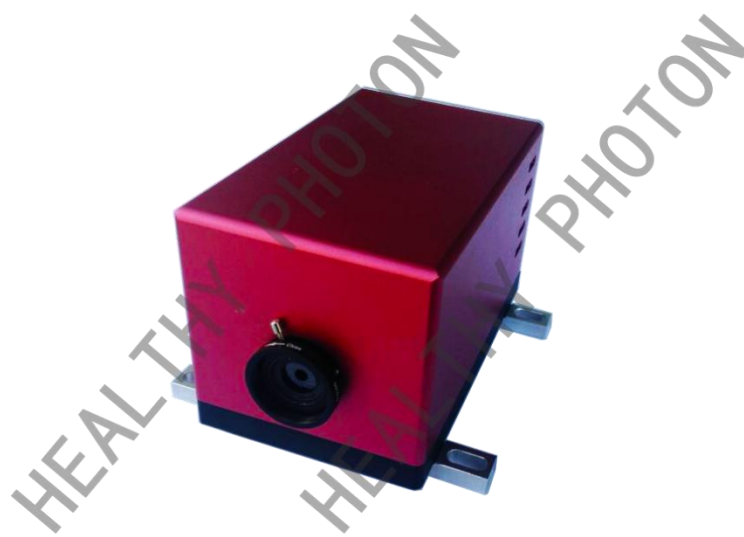




HealthyPhoton

Model : HPQCL-Q

Quantum Cascade Laser Module



Date	Version
2018/2/23	V1.0



Index

Index.....	2
1. Introduction.....	3
2. Product Description.....	3



1. Introduction

HealthyPhoton launched the first QCL emitter module in China, which integrates a high-quality QC laser chip, a Peltier cooler, an output beam collimating lens, and an auxiliary HeNe laser-alignment module. A complete QCL-based spectroscopic demo system can be built based on this QCL emitter module, with our QCL driver, TEC controller, and MCT detector. It is a complete turn-key system with a low maintenance cost, which helps customers build a QCL-based system with the least engineering effort.

2. Product Description

- Room temperature CW QCL chip with wavelength available from 4 to 12 μ m range
- DFB single-mode output optical power that can reach up to 50 mW
- FP multi-mode optical power that can reach up to 100 mW
- Output beam collimated, including an optional coaxial HeNe red alignment beam
- Low-noise air fan cooling
- Easy-to-set standard DB9 connector